

Coalition For A Safe Environment



WILMINGTON
WEATHER STATION

PRESENTATION

Coalition For A Safe Environment



Wilmington Weather Station

**Was Funded By A
California Air Resources Board
Supplemental Environmental Project Grant**



Is a Wilmington Community Weather Station created and operated by the Coalition For A Safe Environment a Wilmington Non-Profit Environmental Justice Organization as a public service and educational opportunity.

There are few community weather stations operated by residents and non-profit organizations

How Can Community Weather Stations Benefit The Community?

- * They provide more accurate local weather information**
- * The information can help you be better prepared for bad weather**
- * They can track local climate change impacts**
- * They can help you be better prepared for climate change impacts**
- * They can identify weather conditions that can make air pollution worse**
- * They provide information so you can take health care precautions**
- * The data assists you in advocating for stricter air pollution regulations**
- * The data assists you in advocating for industries to decrease their heat**
- * Train students for new career job opportunities**

What is an example of local business industries increasing local community temperature?

The Wilmington community is approximately square in shape. We have three major oil refineries in three corners of Wilmington. So the community is basically surrounded. Oil refineries generate tremendous heat during their manufacturing of petroleum products. In 2018 the Coalition For A Safe Environment conducted research comparing Wilmington's annual heat temperature to Los Angeles, California, the US and we discovered that Wilmington's average temperature was higher.

This Micro Scale Heat Impact Is Called The “ Urban Heat Island Affect “

High Heat Exposure Causes Public Health Impacts

- * Increased Heat Strokes**
- * Increased Body Cramps**
- * Increased Heat Exhaustion**
- * Increased Virus Infections**
- * Increased Mosquito Infections**
- * Increased Health Care Costs**
- * Missed Days At Work**
- * Missed Days At School**

Increased Weather Temperature Also Causes Significant Environmental & Economic Impacts

- * Heat Waves**
- * Drought**
- * Increased Ground Temperature**
- * Increased Water Temperature**
- * Worse Water Quality**
- * Worse Air Pollution**
- * Increased Sea Level Rise**
- * Increased Floods**
- * Increased & More Intense Hurricanes**
- * Increased Endangered Wildlife & Habitats**
- * Higher Electric Bills**
- * Higher Taxes**
- * More Expensive Food**

How Else Can A Weather Station Benefit A Community?

Accurate Weather Data Supports

Ambient Air Quality Monitoring

Air Pollution Monitoring

Climate Change Monitoring

Extreme Wind Direction Monitoring

Micro Urban Heat Island Effect Monitoring

Air-Heat-Odor Plume Direction Modeling

Chemical Dispersion Plume Modeling

Public Safety Assessment

Emergency Response Hazards Assessment

What Type Of Weather Station Does Wilmington Have?

Gill Instruments MaxiMet GMX 600 Weather Station



MaxiMet is an advanced compact all digital weather station designed with proven scientific sensor technologies to measure meteorological and environmental parameters to international standards.

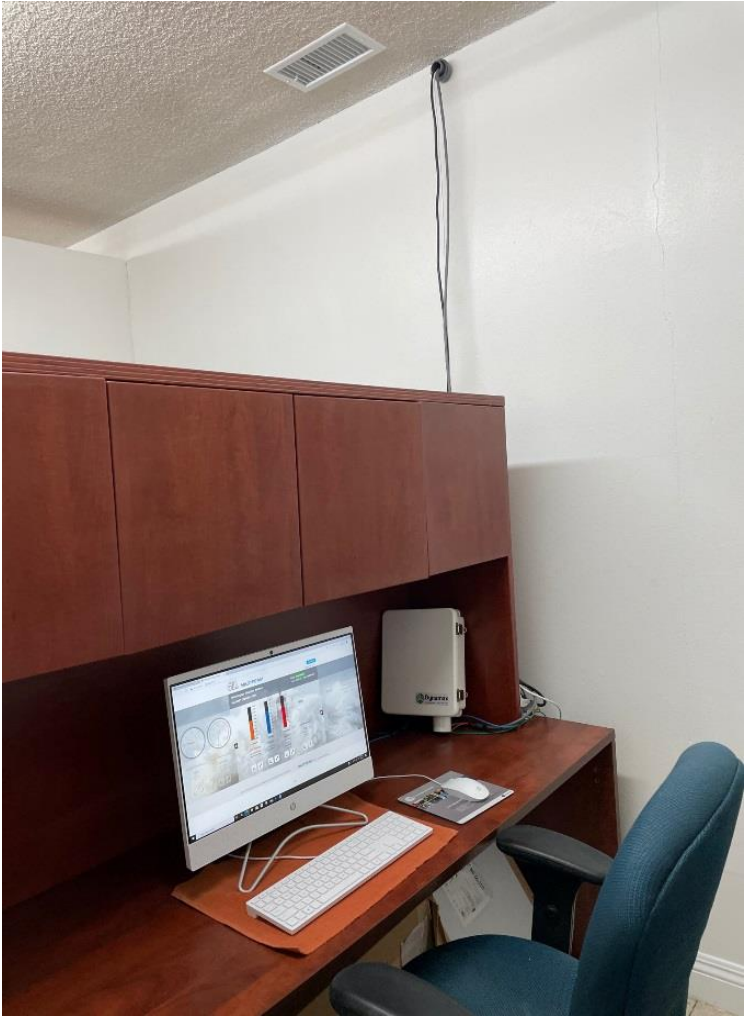
Where Is The Wilmington Weather Station Located?

Coalition For A Safe Environment Office Roof
1601 N. Wilmington Blvd, Ste. B Wilmington



Coalition For A Safe Environment Office

Weather Station Computer Workstation



CFASE Installed A UPS-Uninterrupted Power Supply

The UPS Back-Up Power Will Supply Emergency Power For 20-30 Minutes
Wilmington Has 3-5 Power Outages Every Year

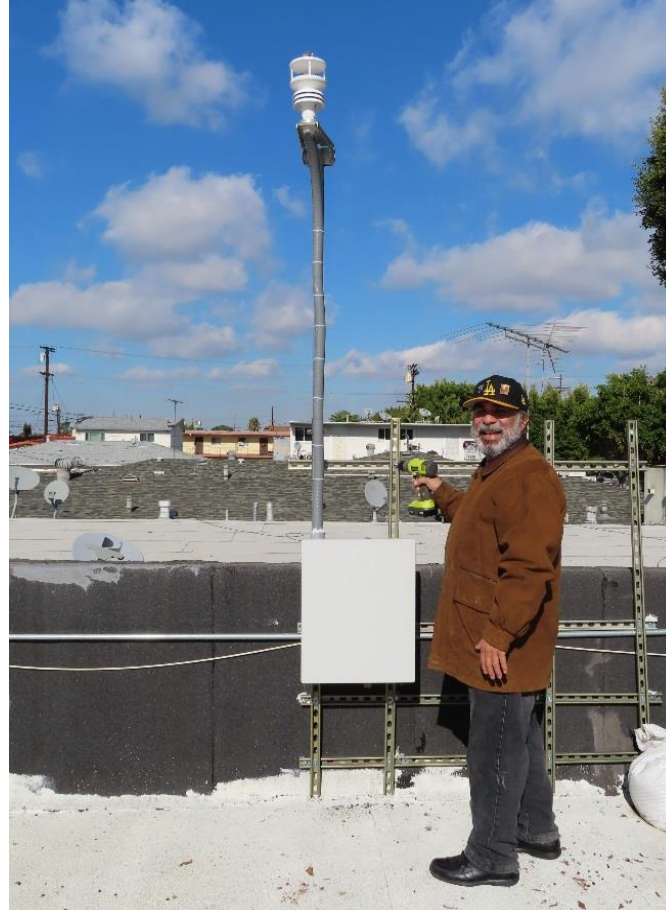


Who Built And Installed The Wilmington Weather Station?

Coalition For A Safe Environment Volunteer Members



Danilo Marquez



Ricardo Pulido

Jesse N Marquez

Weather Station Environmental Measurement Parameters

- **Air Temperature**
- **Relative Humidity**
- **Absolute Humidity**
- **Precipitation**
- **Dew Point**
- **Barometric Air Pressure**
- **Air Density**
- **Wind Direction**
- **Wind Speed**
- **Wind Chill**
- **True/Apparent Wind**
- **Compass**
- **Angle of Tilt**

Wilmington Weather Station

Computer Screen Data

GILL MetSTREAM

Configure

Dashboards: [1](#) [2](#) [3](#) [4](#)

Wilmington Weather Station
MAXIMET GMX600-1-0001

Status: **Connected**

Time: 15:44:31 Date: 05/01/2021



Wind Direction

201 °

Max: 348 °
Min: 11 °



Wind Speed

5.53 mp/h

Max: 9.28 mp/h
Min: 0.13 mp/h



Corrected Wind Direction

319 °

Max: 359 °
Min: 0 °



Corrected Wind Speed

5.53 mp/h

Max: 9.28 mp/h
Min: 0.13 mp/h



Wilmington Weather Station

Computer Screen Data



Configure

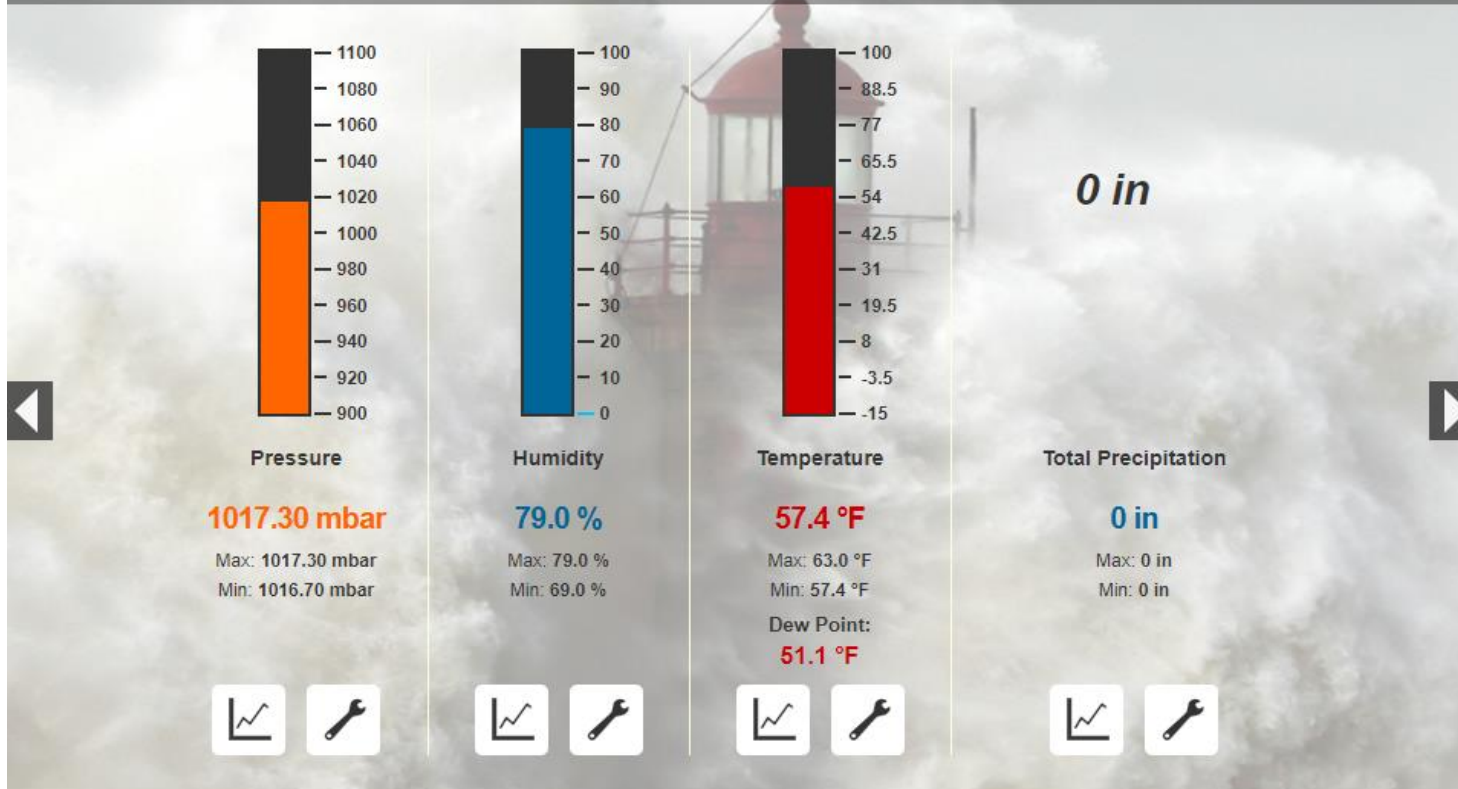
Dashboards: 1 2 3 4

Wilmington Weather Station

MAXIMET GMX600-1-0001

Status: **Connected**

Time: 16:51:01 Date: 05/01/2021



Wilmington Weather Station

Computer Screen Data

GILL MetSTREAM

Configure

Dashboards: 1 2 3 4

Wilmington Weather Station
MAXIMET GMX600-1-0001

Status: **Connected**

Time: 16:53:21 Date: 05/01/2021

0 in/h

Precipitation Intensity

0 in/h

Max: 0 in/h
Min: 0 in/h



Latitude: +33.795392°
Longitude: -118.275456°
Altitude: +0017.10m

GPS Location

Latitude: +33.795392°
Longitude: -118.275456°
Altitude: +0017.10m

Time: 00:54:03
Date: 06-01-2021

Instrument Time

Time: 00:54:03
Date: 06-01-2021

11.8 V

Voltage

11.8 V

Max: 11.9 V
Min: 11.8 V



Is There A Wilmington Weather Station Website? Yes!

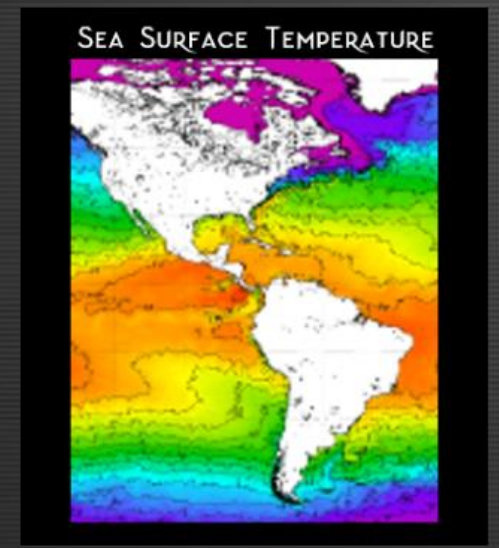
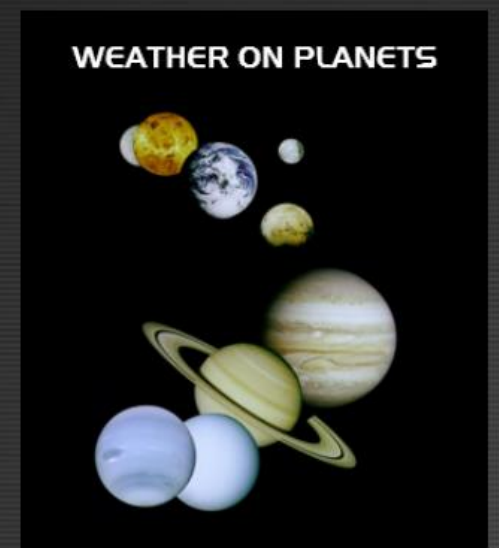
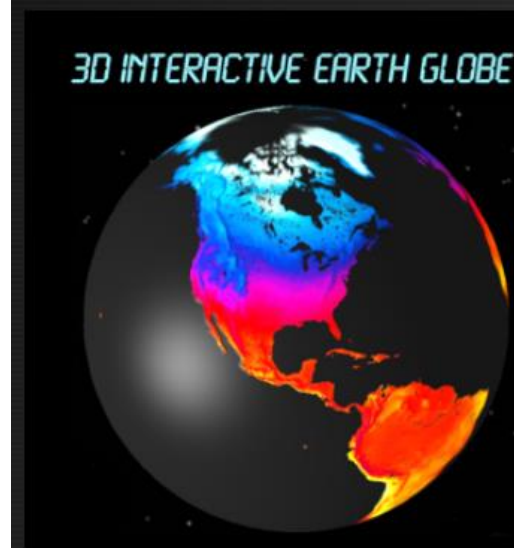
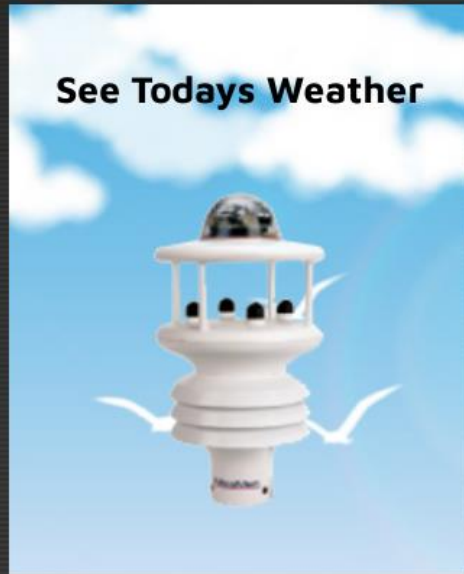
www.wilmingtonweather.net



What Types Of Information & Resources Are On The Website?

JANUARY 2021

Sun	Mon	Tue	Wed	Thu	Fri	Sat
					1	2
3	4	5	6	7	8	9
10	11	12	13	14	15	16
17	18	19	20	21	22	23
24	25	26	27	28	29	30
31						



What Types Of Information & Resources Are On The Website?

Weather Information



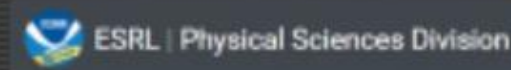
Weather Harbor Park

Student Summer Weather Camps



What Types Of Information & Resources Are On The Website?

Climate Change Information



What Types Of Information & Resources Are On The Website?

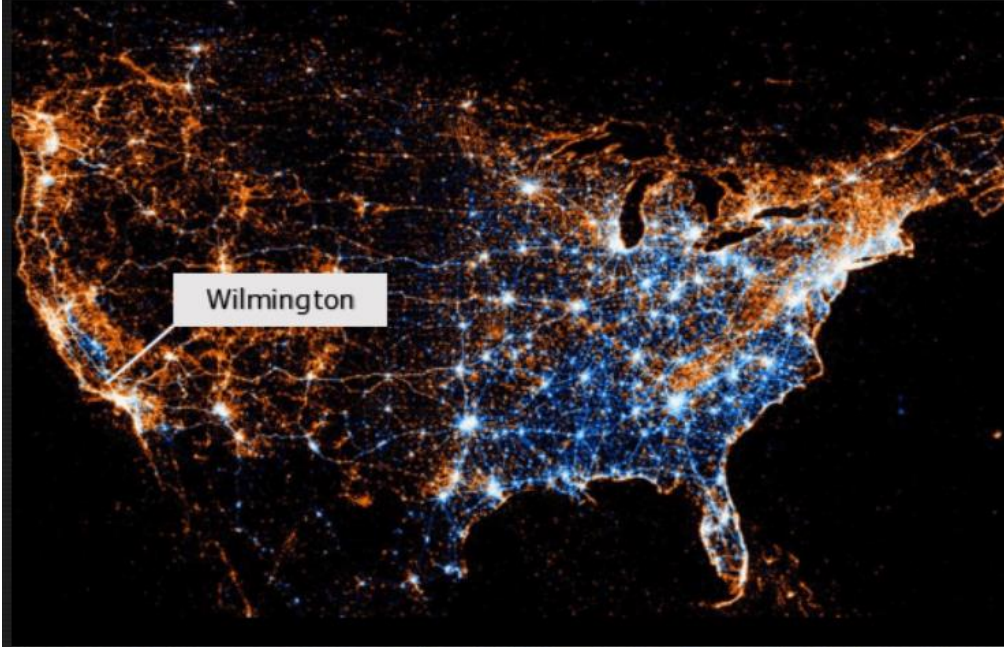
Air Quality Information



Children Weather & Climate Information Websites



Where is Wilmington?



How Can I Get Involved In The Wilmington Weather Station?

You Can Be A Student or Adult Volunteer

What Job Career Skills Can I Learn?

Weather News Reporter

Weather Station Management

Weather Researcher - Weather & Climate Data

Technician - Equipment Maintenance & Repair

IT Technician - Computer & Software Operation

Social Media Coordinator

Photographer/Videographer

Webmaster - Website Updates & Maintenance



Wilmington Weather Station
www.wilmingtonweather.net

Coalition For A Safe Environment
1601 N. Wilmington Blvd., Ste. B
Wilmington, California USA 90744
424-287-0060 310-590-0177